

Power to Grow NOLA

New Orleans will be positioned for continued economic growth and development when Entergy New Orleans begins a two-phase technological upgrade to our electric power transmission system this summer.

The project will enhance reliability, increase transmission capacity and help ensure the availability of affordable power now and into the future.

The map to the left outlines the area affected by Phase I of the upgrade. The orange line indicates the path along which the existing electric transmission lines will be upgraded. Poles will not be affected.



Electric Power Transmission System Upgrade Facts

- Entergy is investing **\$30 million** in the electric transmission infrastructure of New Orleans with the Power to Grow NOLA project.
- When completed, the city will have a technologically advanced system with **increased capacity and reliability**.
- Phase I will begin in July 2015 and affect the **Audubon Park, upper Magazine Street and Annunciation Street areas**.
- The project will replace the existing 230 kilovolt transmission lines with a **3M™ aluminum conductor composite reinforced high-voltage wire** that will move power more reliably and efficiently.
- The use of advanced technology will allow Entergy to replace the lines **without disturbing existing steel poles**.
- Safety is our top priority. Entergy has developed **detailed safety measures** tailored to meet the needs of the project and impacted areas.
- Entergy has developed a **detailed communication plan** to keep neighborhoods, businesses, institutions and government agencies up-to-date on the project's progress.
- Vehicular, pedestrian and bicycle traffic plans, complete with maps and timelines, will be available to help you **safely navigate around the project work areas**.

powertogrownola@entergy.com **Hotline: (504) 670-3624**

Frequently Asked Questions

Q: What is the timeframe of the project?

A: Construction on Phase I of the project will start in mid-July and is scheduled to be completed by the end of October.

Q: Should I be concerned about safety issues?

A: Our top priority is to have a safe, accident-free environment. Entergy New Orleans has developed detailed on-site safety measures that have been tailored to meet the needs of the project, community and impacted areas.

Q: When will the crews be working?

A: Crews will work primarily from dawn to dusk, approximately 10-12 hours per day.

Q: Will we notice the transmission construction crews?

A: Yes. Multiple crews will be working simultaneously on each of the designated streets. Crews will use very large equipment, including 24-foot-wide bucket trucks and 120-foot cranes at each of the existing transmission poles.

Q: How will my neighborhood be impacted?

A: When construction is taking place in your neighborhood, there will be revolving street closures, no parking zones, as well as pedestrian and bicycle restrictions.

Q: Will my neighborhood lose power?

A: Although we don't anticipate any electrical service interruptions, it is possible that some homes and businesses will lose power during the project. However, we should know these situations in advance and will alert impacted customers so that they can make necessary plans.

Q: How long will crews be working on my block?

A: The duration of work on your block will vary depending on the distance between the existing poles in that section of the project. Entergy has developed a detailed communication plan to keep you informed before the crews reach your neighborhood. We will provide you with specific information to ensure you have the best information in a timely manner.

Q: What about the trees and other vegetation?

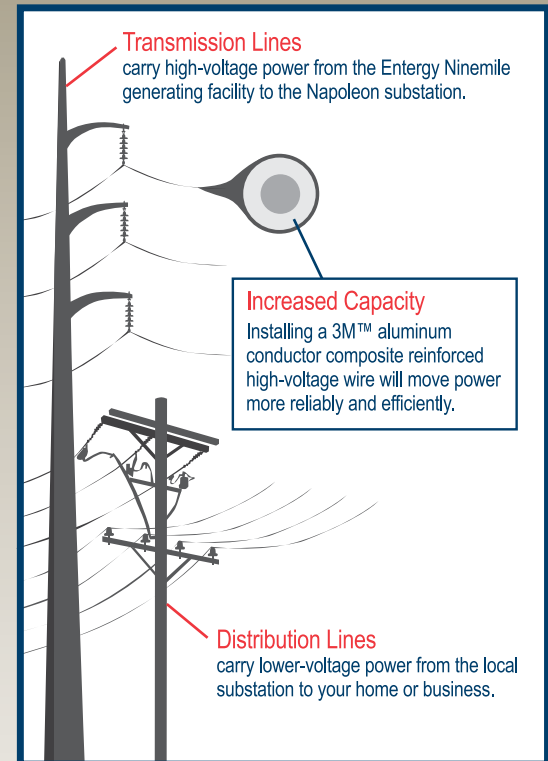
A: Entergy New Orleans works closely with the city's Parks and Parkways department to ensure trees are trimmed in such a way to protect their health while still maintaining reliability – something we already do as part of our annual proactive maintenance plan. As always, safety is our top priority. We will trim or remove trees that are too close to power lines to eliminate hazards, reduce outages and help ensure the safety of the public and crews.

Q: How will I know if my street or block will be directly impacted?

A: If there is a large steel transmission pole located on your street, you will be impacted. Advance notification will be made through a variety of channels including local and social media and direct calls. Additionally, Entergy New Orleans customer service representatives will be knocking on doors and meeting one-on-one with residents and business owners to ensure that everyone is informed of the project construction work zones and timelines. Be on the lookout for Entergy New Orleans representatives in your neighborhood.

Q: Where should I report neighborhood issues and concerns regarding this project?

A: Please call the Power to Grow NOLA hotline number at (504) 670-3624 or send an email to powertogrownola@entergy.com.



powertogrownola@entergy.com
Hotline: (504) 670-3624



 facebook.com/EntergyNOLA

 [@EntergyNOLA](https://twitter.com/EntergyNOLA)