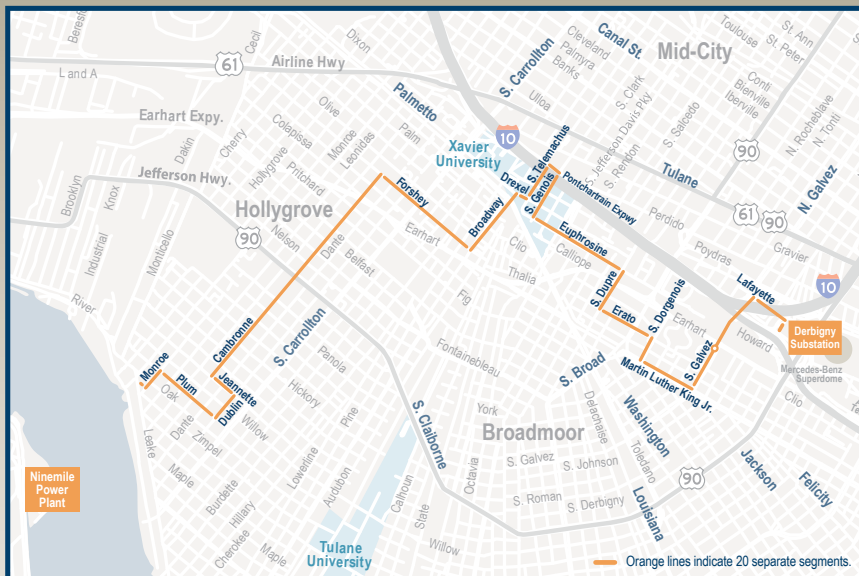


# Power to Grow NOLA



New Orleans will be positioned for continued economic growth and development as Entergy New Orleans continues a two-phase technological upgrade to our electric power transmission system.

The project is enhancing reliability, increasing transmission capacity and helping to ensure the availability of affordable power now and into the future.

The map to the left outlines the area impacted by Phase II of the upgrade. The orange lines indicate the path along which the existing electric transmission lines are being upgraded. Distribution poles will not be affected.

## Electric Power Transmission System Upgrade Facts

- Entergy is investing **\$30 million** in the electric transmission infrastructure of New Orleans with the Power to Grow NOLA project.
- When completed, the city will have a technologically advanced system with **increased capacity and reliability**.
- Phase II will begin in October 2015 and impact the **Carrollton-Hollygrove area** including **Cambronne Street** and the **outer portions of the Xavier University footprint**.
- The project will replace the existing 230 kilovolt transmission lines with a **3M™ aluminum conductor composite reinforced high-voltage wire** that will move power more reliably and efficiently.
- The use of advanced technology will allow Entergy to replace the lines **without disturbing existing steel poles**.
- Safety is our top priority. Entergy has developed **detailed safety measures** tailored to meet the needs of the project and impacted areas.
- Entergy has developed a **detailed communication plan** to keep neighborhoods, businesses, institutions and government agencies up-to-date on the project's progress.
- Vehicular, pedestrian and bicycle traffic plans, complete with maps and timelines, will be available to help you **safely navigate around the project work areas**.

**Hotline: 504-670-3624   powertogrownola@entergy.com   powertogrownola.com**

# Frequently Asked Questions

**Q: What is the timeframe of the project?**

A: Construction on Phase II of the project will start in October and is scheduled to be completed by March 2016.

**Q: Should I be concerned about safety issues?**

A: Our top priority is to have a safe, accident-free environment. Entergy New Orleans has developed detailed on-site safety measures that have been tailored to meet the needs of the project, community and impacted areas.

**Q: When will the crews be working?**

A: Crews will work primarily from dawn to dusk, approximately 10-12 hours per day.

**Q: What can I expect to see in my neighborhood during the upgrade?**

A: Multiple crews will be working simultaneously on each of the designated streets. Crews will use very large equipment, including 24-foot-wide bucket trucks and 120-foot cranes at each of the existing steel transmission poles.

**Q: How will my neighborhood be impacted?**

A: When construction is taking place in your neighborhood, there will be revolving street closures, no parking zones, as well as pedestrian and bicycle restrictions.

**Q: Will my neighborhood lose power?**

A: Although we don't anticipate any electrical service interruptions, it is possible that some homes and businesses will lose power during the project. Entergy New Orleans will alert impacted customers of the time and expected duration of planned electrical service interruptions so that they can make necessary arrangements.

**Q: How long will crews be working on my block?**

A: The duration of work on your block will vary depending on the distance between the existing poles in that section of the project. Entergy has developed a detailed communication plan to keep you informed before the crews reach your neighborhood. We will provide you with specific information to ensure you have the best information in a timely manner.

**Q: Can I keep my car parked in my driveway during the upgrade work?**

A: We encourage customers to move their cars so that they are not restricted from the use of their cars while the work is going on. Some of the work is high-risk, meaning no pedestrian, bicycle or vehicle movement is allowed during critical periods to help ensure the safety of the public and crews.

**Q: What about the trees and other vegetation?**

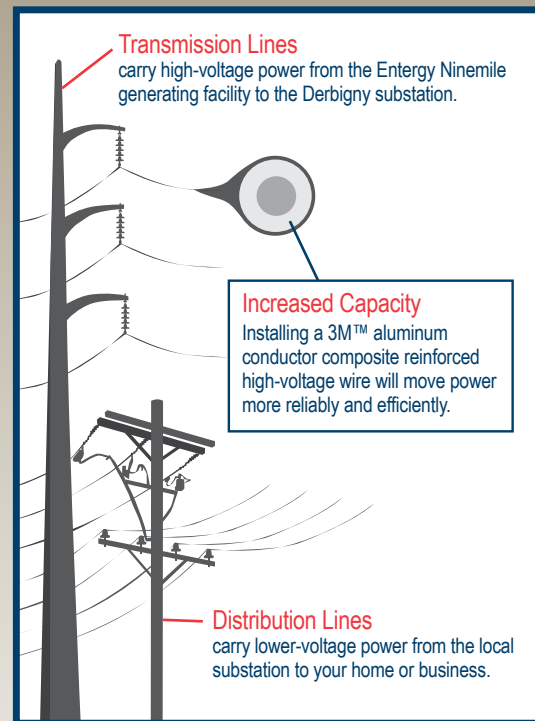
A: Entergy New Orleans works closely with the city's Parks and Parkways department to ensure trees are trimmed in such a way to protect their health while still maintaining reliability – something we already do as part of our proactive maintenance plan. As always, safety is our top priority. We will trim or remove trees that are too close to power lines to eliminate hazards, reduce outages and help ensure the safety of the public and crews.

**Q: How will I know if my street or block will be directly impacted?**

A: Advance notification will be made through a variety of channels including local and social media and direct calls. Additionally, Entergy New Orleans customer service representatives will be knocking on doors and meeting one-on-one with residents and business owners to ensure that everyone is informed of the project construction work zones and timelines. Be on the lookout for Entergy New Orleans representatives in your neighborhood.

**Q: Where should I report neighborhood issues and concerns regarding this project?**

A: Please call the Power to Grow NOLA hotline number at (504) 670-3624 or send an email to [powertogrownola@entergy.com](mailto:powertogrownola@entergy.com).



**Hotline: 504-670-3624**  
**[powertogrownola@entergy.com](mailto:powertogrownola@entergy.com)**  
**[powertogrownola.com](http://powertogrownola.com)**



 [facebook.com/EntergyNOLA](https://facebook.com/EntergyNOLA)

 [@EntergyNOLA](https://twitter.com/EntergyNOLA)